

# Math Course Placement

Students with placement scores lower than MATH 0420 see page 2.

For Multiple Measures details for MATH 1331, 1351 and 1300 see page 3.

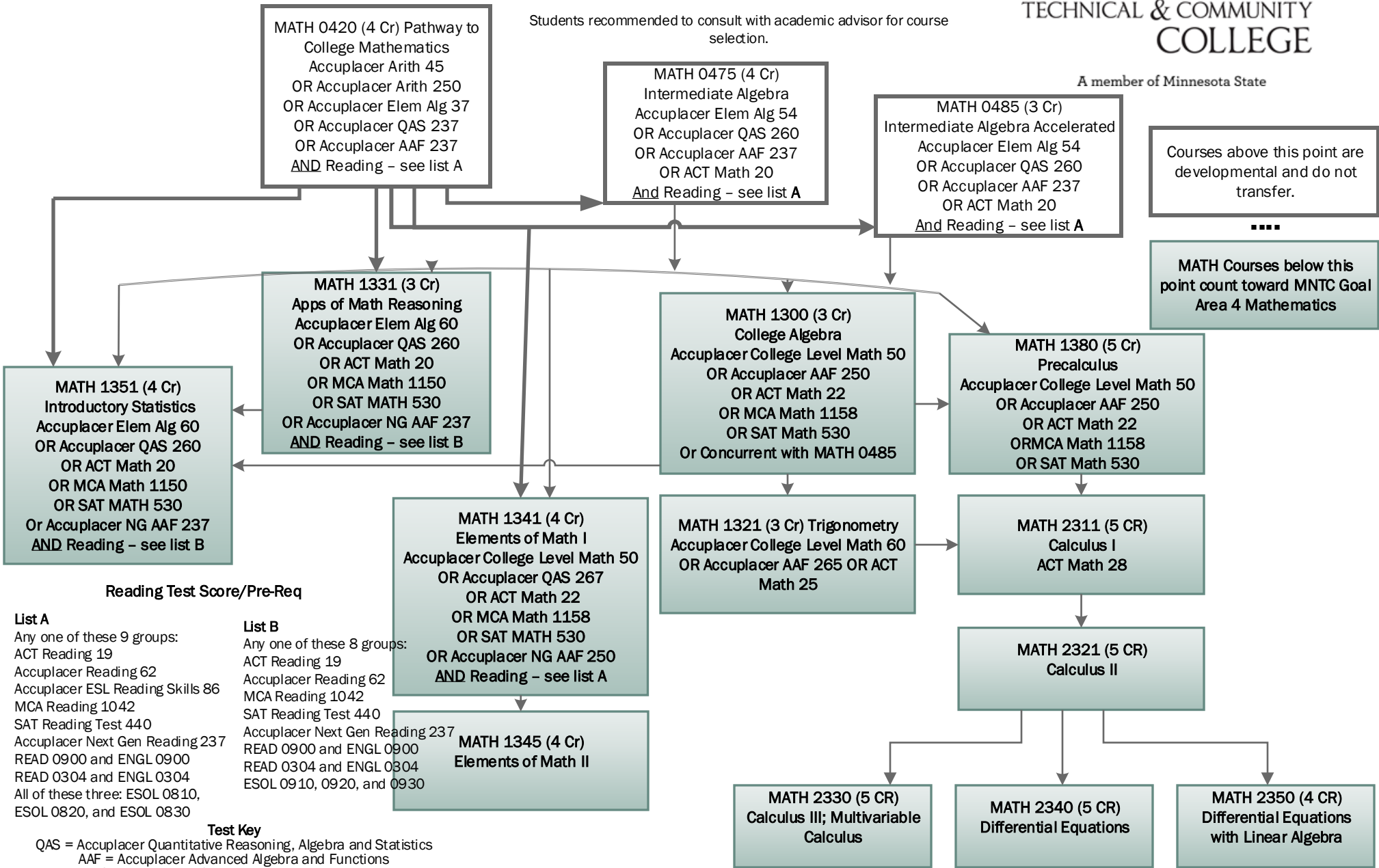
Students recommended to consult with academic advisor for course selection.



A member of Minnesota State

Courses above this point are developmental and do not transfer.

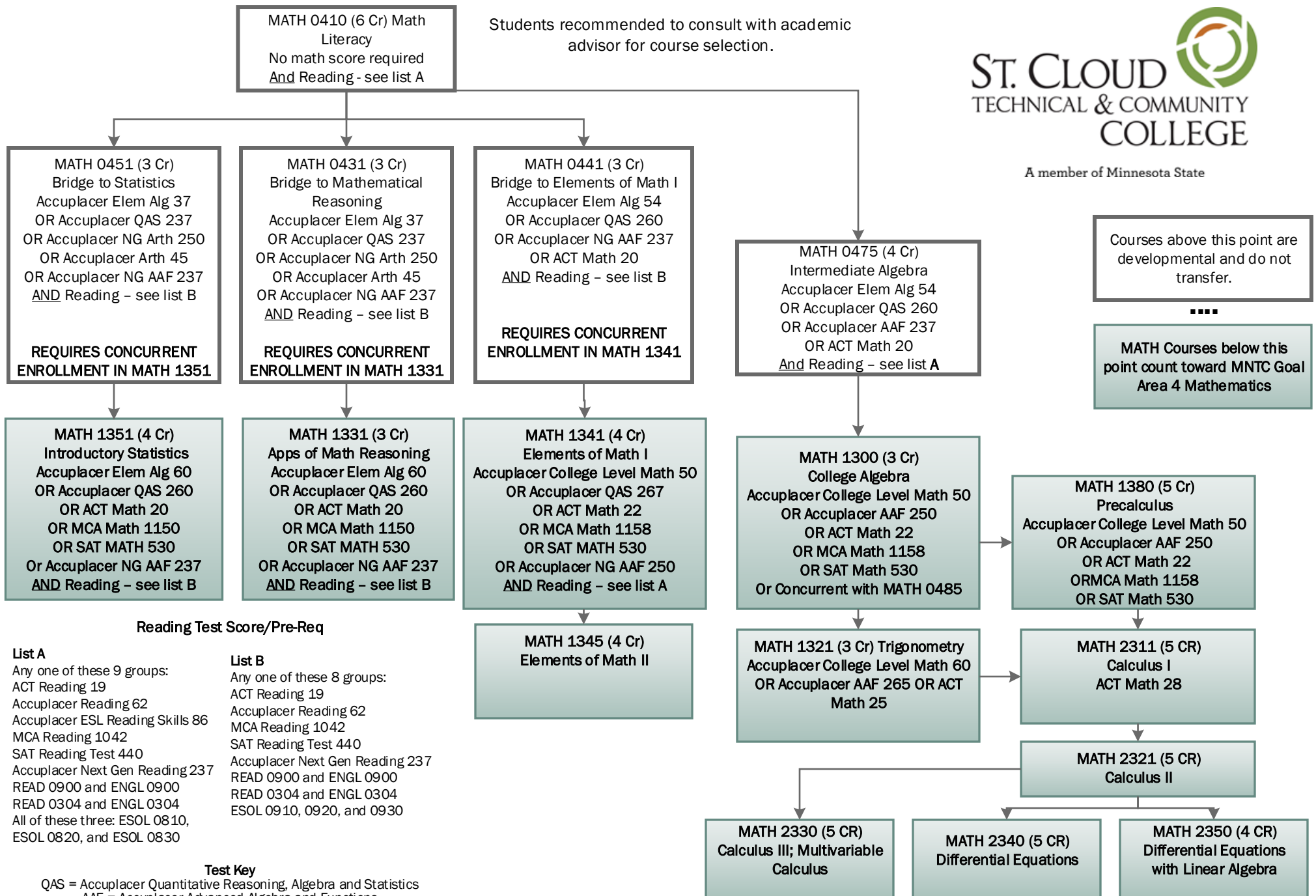
MATH Courses below this point count toward MNTC Goal Area 4 Mathematics



- Reading Test Score/Pre-Req**
- List A**  
Any one of these 9 groups:  
ACT Reading 19  
Accuplacer Reading 62  
Accuplacer ESL Reading Skills 86  
MCA Reading 1042  
SAT Reading Test 440  
Accuplacer Next Gen Reading 237  
READ 0900 and ENGL 0900  
READ 0304 and ENGL 0304  
All of these three: ESOL 0810, ESOL 0820, and ESOL 0830
- List B**  
Any one of these 8 groups:  
ACT Reading 19  
Accuplacer Reading 62  
MCA Reading 1042  
SAT Reading Test 440  
Accuplacer Next Gen Reading 237  
READ 0900 and ENGL 0900  
READ 0304 and ENGL 0304  
ESOL 0910, 0920, and 0930

**Test Key**  
QAS = Accuplacer Quantitative Reasoning, Algebra and Statistics  
AAF = Accuplacer Advanced Algebra and Functions  
MCA = Minnesota Comprehensive Assessments

Students recommended to consult with academic advisor for course selection.



Courses above this point are developmental and do not transfer.

MATH Courses below this point count toward MNCTC Goal Area 4 Mathematics

**Reading Test Score/Pre-Req**

**List A**

Any one of these 9 groups:  
 ACT Reading 19  
 Accuplacer Reading 62  
 Accuplacer ESL Reading Skills 86  
 MCA Reading 1042  
 SAT Reading Test 440  
 Accuplacer Next Gen Reading 237  
 READ 0900 and ENGL 0900  
 READ 0304 and ENGL 0304  
 All of these three: ESOL 0810,  
 ESOL 0820, and ESOL 0830

**List B**

Any one of these 8 groups:  
 ACT Reading 19  
 Accuplacer Reading 62  
 MCA Reading 1042  
 SAT Reading Test 440  
 Accuplacer Next Gen Reading 237  
 READ 0900 and ENGL 0900  
 READ 0304 and ENGL 0304  
 ESOL 0910, 0920, and 0930

**Test Key**

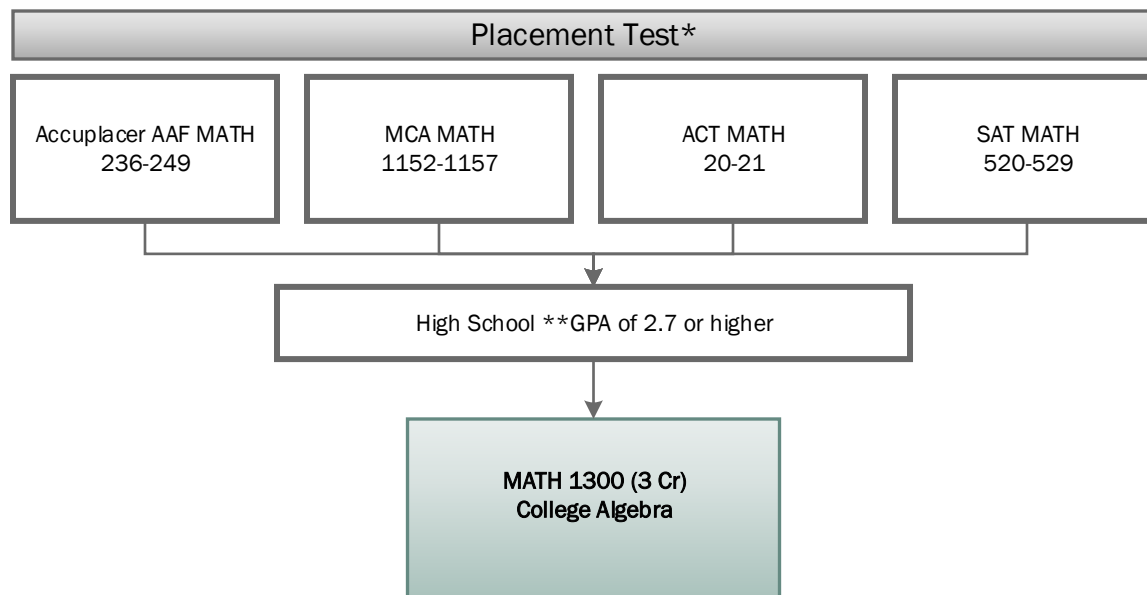
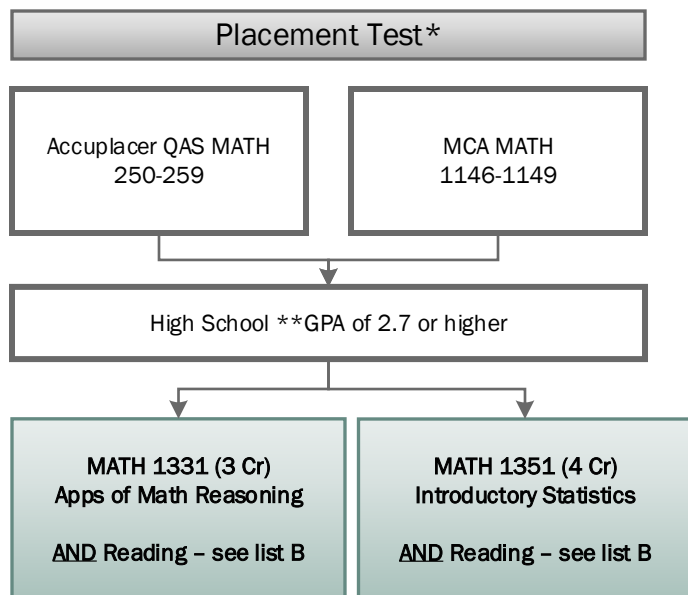
QAS = Accuplacer Quantitative Reasoning, Algebra and Statistics  
 AAF = Accuplacer Advanced Algebra and Functions  
 MCA = Minnesota Comprehensive Assessments

# Multiple Measures\*\*\* MATH 1331, 1351, and 1300

NOTE: Students are evaluated for placement based on multiple measures at the time of application, or by the Testing Center.



A member of Minnesota State



See page 1 for full Math Pathway beyond MATH 1331, 1351, and 1300

\*Accuplacer scores valid for 2 years from test date, all others scores are valid 5 years from test date  
 \*\*High School GPA must be within the last 10 years, and from a qualifying high school using a 4.0 GPA scale  
 \*\*\***This information is subject to change. Please speak with an advisor when choosing your courses.**

### Test Key

QAS = Accuplacer Quantitative Reasoning, Algebra and Statistics  
 AAF = Accuplacer Advanced Algebra and Functions  
 MCA = Minnesota Comprehensive Assessments

### Reading Test Score/Pre-Req

#### List A

Any one of these 9 groups:  
 ACT Reading 19  
 Accuplacer Reading 62  
 Accuplacer ESL Reading Skills 86  
 MCA Reading 1042  
 SAT Reading Test 440  
 Accuplacer Next Gen Reading 237  
 READ 0900 and ENGL 0900  
 READ 0304 and ENGL 0304  
 All of these three: ESOL 0810,  
 ESOL 0820, and ESOL 0830

#### List B

Any one of these 8 groups:  
 ACT Reading 19  
 Accuplacer Reading 62  
 MCA Reading 1042  
 SAT Reading Test 440  
 Accuplacer Next Gen Reading 237  
 READ 0900 and ENGL 0900  
 READ 0304 and ENGL 0304  
 ESOL 0910, 0920, and 0930